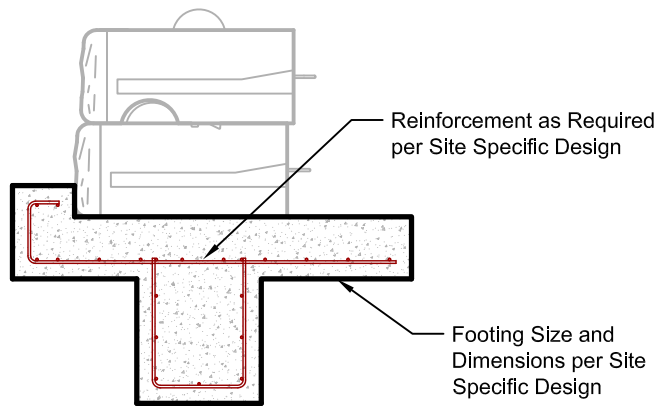


NOTES:

- Both 9³/₈" (230mm) and 16⁵/₈" (422mm) (with filled trough) setback blocks could be considered for seawall applications
- Use ASTM No. 57 stone (or as specified by local Professional Engineer) to infill between blocks.
- Maximum wall height charts are not provided for walls in water applications due to the variety of site-specific variables. Contact your local Professional Engineer for specific details and final design.
- Walls may require geogrid reinforcement. Refer to final engineering plans.

SEAWALL WITH LARGE SETBACK BLOCKS - CONCEPTUAL SECTION

(NO SCALE)



OPTIONAL CONCRETE FOOTING

(NO SCALE)

DRAWN BY:	JRJ
APPROVED BY:	JRJ
DATE:	23MAR2016
SHEET:	1 of 1

TITLE:	Conceptual Seawall Detail Large Setback Blocks
FILE:	2 Conceptual Seawall Detail - Large Setback 032316.dwg

REDI-ROCK®
 05481 US 31 SOUTH, CHARLEVOIX, MI 49720
 (866) 222-8400 ext 3010 • engineering@redi-rock.com
www.redi-rock.com