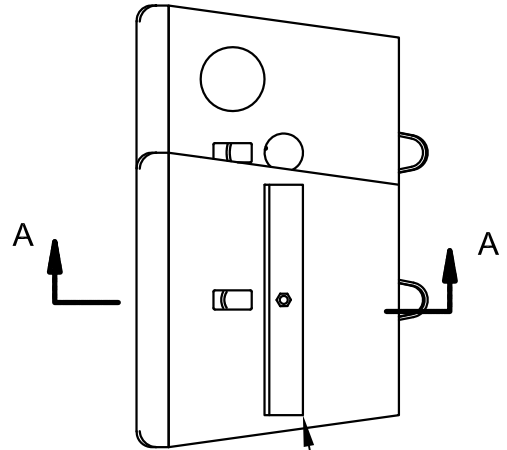
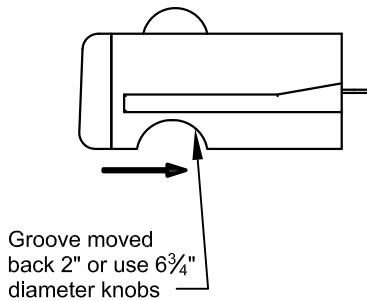
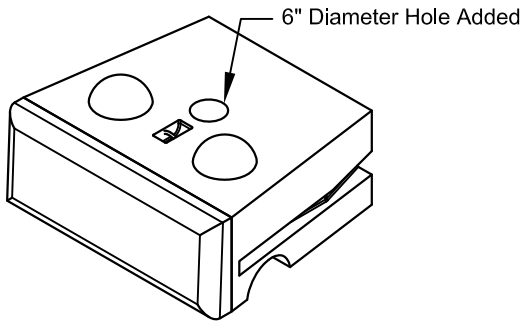


# Vertical Tie-Down System

Hot-Dip Galvanized Vertical Rods and steel plates at the bottom and steel angle at the top may be bolted together for specific needs where retaining walls require a vertical tie down.

Note: In these applications the blocks are modified by using a ZERO setback per block with 6 3/4" diameter knobs and adding 6" diameter holes to accommodate the vertical rods, in each block.

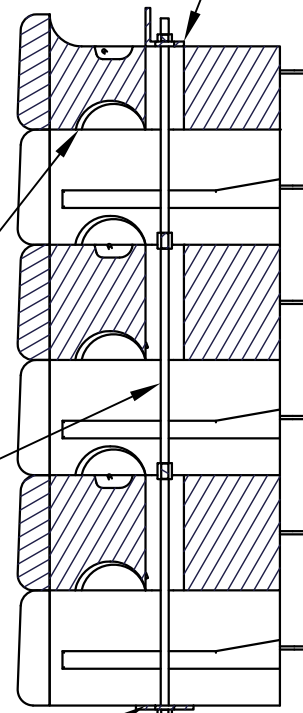


Steel Angle

NOTE: Groove is moved 2" back or use 6 3/4" diameter knobs so blocks stack vertically.

Galvanized Threaded Rod

Coupler welded to steel plate



SECTION A-A

This drawing is for reference only. Determination of the suitability and/or manner of use of any details contained in this document is the sole responsibility of the design engineer of record. Final project designs, including all construction details, shall be prepared by a licensed professional engineer using the actual conditions of the proposed site.

DRAWN BY:	JRJ
APPROVED BY:	JRJ
DATE:	06-22-2015
SHEET:	1 of 1

TITLE:	<h2>Vertical Tie-Down System</h2>
FILE:	

**REDI-ROCK®**

05481 US 31 SOUTH, CHARLEVOIX, MI 49720  
 (866) 222-8400 ext 3010 • [engineering@redi-rock.com](mailto:engineering@redi-rock.com)  
[www.redi-rock.com](http://www.redi-rock.com)