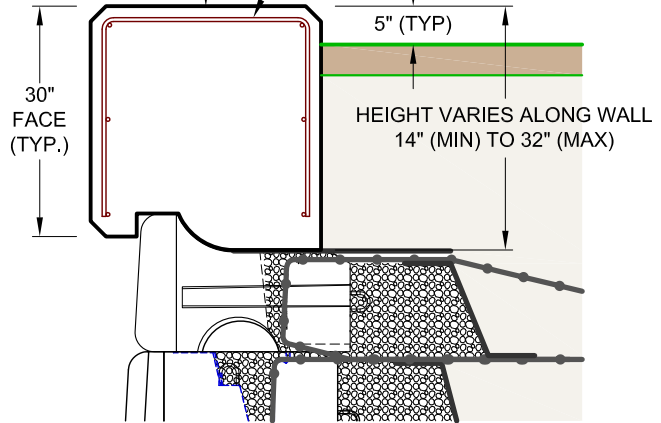
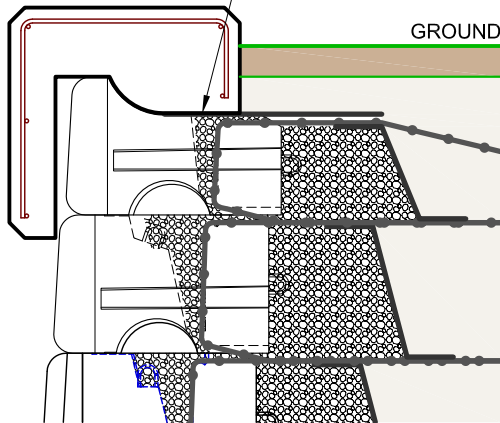


CAST-IN-PLACE COPING

NON-WOVEN GEOTEXTILE OR GEOMEMBRANE BARRIER BETWEEN CAST-IN-PLACE COPING AND TOP OF WALL (TYP.)

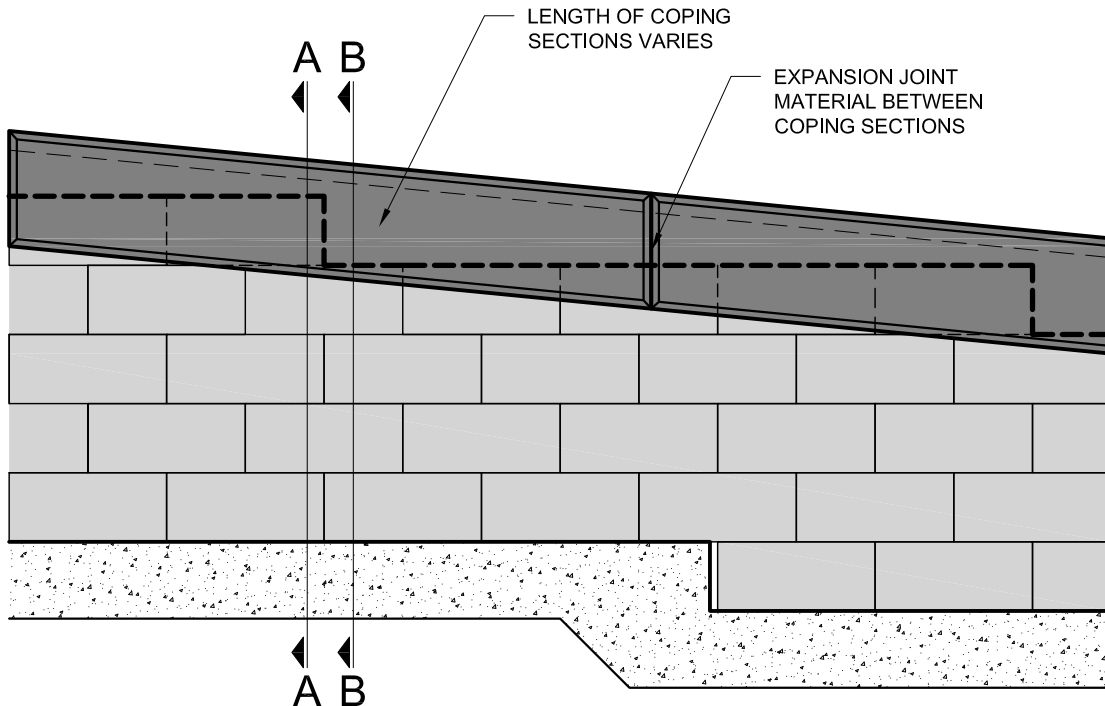
CAST IN PLACE COPING (DESIGN BY OTHERS)

REINFORCEMENT (DESIGN TO PROJECT REQUIREMENTS)



SECTION A-A
(JUST BEFORE STEP DOWN
ON TOP OF WALL)

SECTION B-B
(JUST AFTER STEP DOWN
ON TOP OF WALL)



ELEVATION VIEW

DRAWN BY:	JRJ
APPROVED BY:	JRJ
DATE:	06-22-2015
SHEET:	1 of 1

TITLE:	Cast-In-Place Wall Coping
FILE:	

REDI-ROCK®

05481 US 31 SOUTH, CHARLEVOIX, MI 49720
(866) 222-8400 ext 3010 • engineering@redi-rock.com
www.redi-rock.com