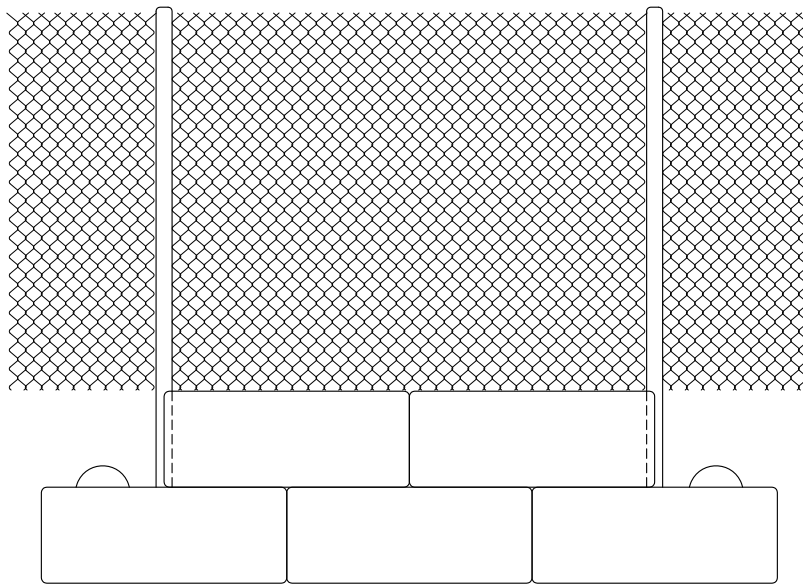
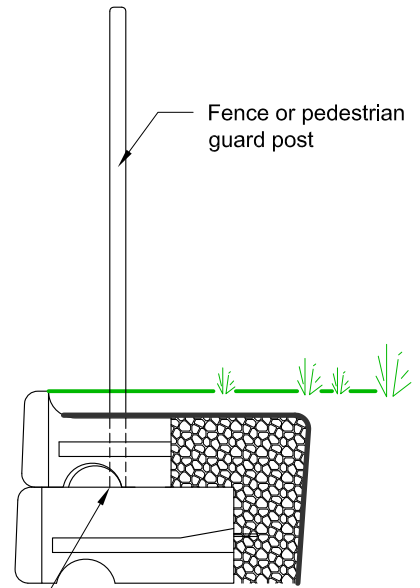


Fence or Pedestrian Guard Connection Locations



Front View



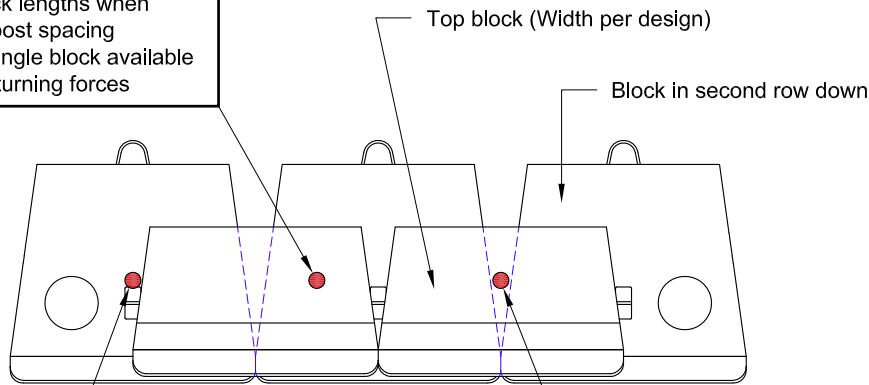
Fence or pedestrian guard post

Embedment depth as required to resist overturning forces on appurtenance

Side View

Connection Option #1
Anchor into the top block

- Consider block lengths when determining post spacing
- Weight of a single block available to resist overturning forces



Top View

Connection Option #2
Grout posts in v-shaped opening between top blocks

- Spacing in multiples of 46 1/8" (1172 mm)
- Weight of a 2 adjacent blocks available to resist overturning forces

Connection Option #3
Core through top block and grout posts in V-shaped opening between lower blocks

- Spacing in multiples of 46 1/8" (1172 mm)
- Weight of a 2 adjacent blocks on second level down and 3 top row blocks available to resist overturning forces

This drawing is for reference only. Determination of the suitability and/or manner of use of any details contained in this document is the sole responsibility of the design engineer of record. Final project designs, including all construction details, shall be prepared by a licensed professional engineer using the actual conditions of the proposed site.

DRAWN BY:	JRJ
APPROVED BY:	JRJ
DATE:	06-22-2015
SHEET:	1 of 1

TITLE:	Fence or Pedestrian Guard Connection Locations
FILE:	6 Fence or Pedestrian Guard Connection Locations 062215.dwg

REDI-ROCK®
 05481 US 31 SOUTH, CHARLEVOIX, MI 49720
 (866) 222-8400 ext 3010 • engineering@redi-rock.com
 www.redi-rock.com