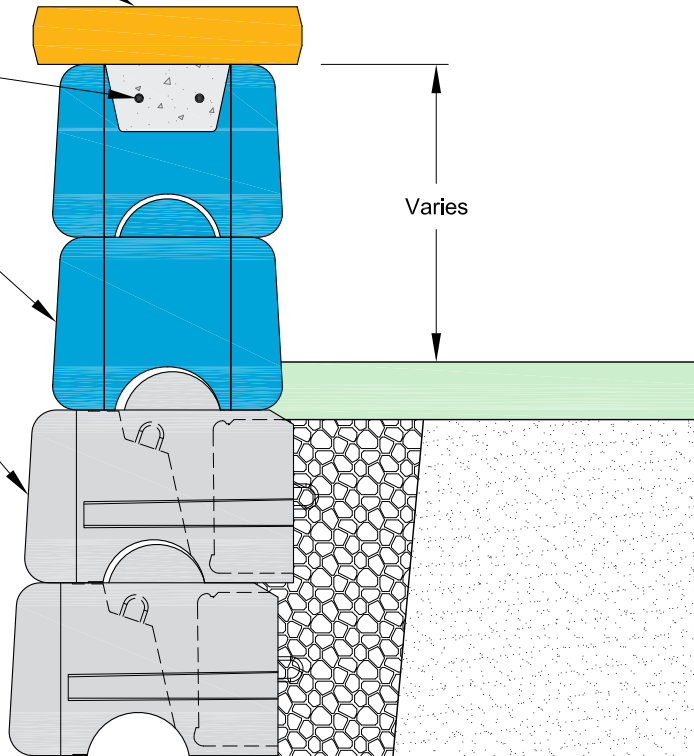


Cap Block, Secure to Freestanding Block with Polyurethane Sealant, or Optional Rebar Embedded in Concrete

Freestanding Garden Block with Two (2) Continuous Reinforcing Bars, Filled with Cast-in-Place Concrete, as Designed by Wall Design Engineer

Freestanding Wall Blocks

Retaining Wall Blocks



Section View

Sealant Adhesive: One-component, highly flexible, non-priming, gun grade, high performance elastomeric polyurethane sealant shall have movement of plus or minus 25% per ASTM C719, tensile strength greater than 200 psi (1.4 MPa) per ASTM D412, and adhesion to peel on concrete greater than 20 PLI per ASTM C794. Apply sealant in one and one half-inch (1.5") (38 mm) diameter round "hersey kiss" shaped dollops located in two rows at the top of the Freestanding blocks at 8" (203 mm) on center.

This drawing is for reference only. Determination of the suitability and/or manner of use of any details contained in this document is the sole responsibility of the design engineer of record. Final project designs, including all construction details, shall be prepared by a licensed professional engineer using the actual conditions of the proposed site.

| | |
|--------------|------------|
| DRAWN BY: | BWL |
| APPROVED BY: | JRJ |
| DATE: | 01-14-2016 |
| SHEET: | 1 of 1 |

| | |
|--------|--|
| TITLE: | Freestanding Bond Beam at Top of Wall |
| FILE: | Freestanding Bond Beam at Top of Wall 011416.dwg |

REDI-ROCK®
 05481 US 31 SOUTH, CHARLEVOIX, MI 49720
 (866) 222-8400 ext 3010 • engineering@redi-rock.com
www.redi-rock.com